

SUCTION LINE ACCUMULATOR


LISTED
 File No. SA45127


 Full Range of HVAC&R Line Products

IMAGES, DRAWINGS

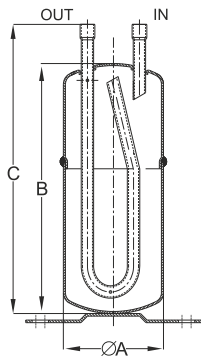
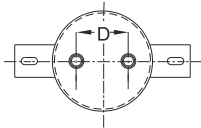


Mounting Stud

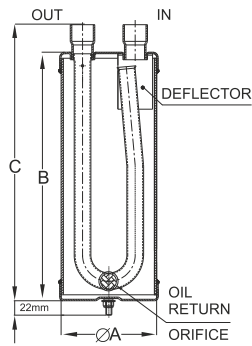
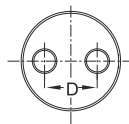


Mounting Flange

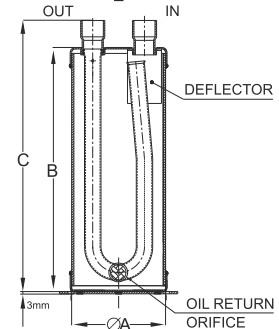
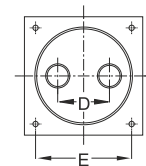
DIMENSIONAL DATA



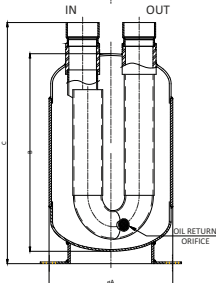
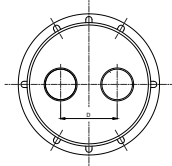
DRAWING - 1



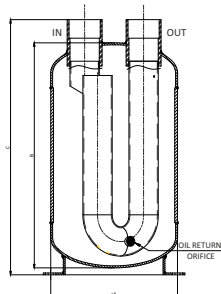
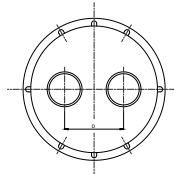
DRAWING - 2



DRAWING - 3



DRAWING - 5



DRAWING - 6

SUCTION LINE ACCUMULATOR

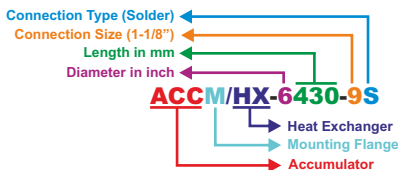
MODEL AVAILABLE &

SELECTION RECOMMENDATION



SR NO	MODEL	HOLDING CAPACITY at +40°F		APPROX. MAX. TON. R-410A AT + 40°F (EVAPORATING TEMP)	CONNECTION SIZE (inch)	DIMENSIONS										MOUNTING OPTIONS	REFER DRG. NO.	1/4" NPT connection							
		R-410A LIQUID LBS	R-410A LIQUID KG			ØA		B		C		D		E											
						mm	inch	mm	inch	mm	inch	mm	inch	mm	inch										
SERIES - Ø 3"																									
1	ACC-3150-3S	1.1	0.50	0.5	3/8" ODF	76.2	3	150	5.91	187	7.36	40	1.57	122.5	4.82	MOUNTING FLANGE	1	NA							
2	ACC-3185-4S	1.5	0.68	0.94	1/2" ODF			185	7.28	223	8.78														
3	ACC-3239-5S	2	0.91	2.1	5/8" ODF			239	9.41	277	10.91			41	1.65				NA	NA	M8 X 1.25PITCH	2			
4	ACC-3349-6S	2.8	1.27	3.15	3/4" ODF			349	13.74	387	15.24														
5	ACC-3370-4S	3	1.36	0.94	1/2" ODF			370	14.57	408	16.06														
SERIES - Ø 4"																									
6	ACC-4254-4S	3.53	1.6	0.94	1/2" ODF	101.6	4	254	10	290	11.41	48	1.89	NA	NA	M10 X 1.5 PITCH	2	NA							
7	ACC-4254-5S			2.1	5/8" ODF																				
SERIES - Ø 5"																									
8	ACC-5216-6S	5	2.26	3.15	3/4" ODF	127	5	216	8.51	252	9.92	70	2.76	NA	NA	M10 X 1.5 PITCH	2	NA							
9	ACC-5216-7S	5	2.26	4.2	7/8" ODF					253.5	9.98			130	5.12	MOUNTING FLANGE	3								
10	ACCM-5216-7S	5	2.26	4.2	7/8" ODF																				
11	ACC-5330-7S	7.5	3.40	4.2	7/8" ODF					330	12.99			367.5	14.46	NA	NA		M10 X 1.5 PITCH	2					
12	ACCM-5330-7S															130	5.12		MOUNTING FLANGE	3					
13	ACC-5330-9S	7.5	3.40	9.45	1-1/8" ODF					430	16.93			467.5	18.41	NA	NA		M10 X 1.5 PITCH	2					
14	ACCM-5330-9S							130	5.12			MOUNTING FLANGE	3												
15	ACC-5430-9S	10	4.54	9.45	1-1/8" ODF			430	16.93	474.5	18.68	NA	NA	M10 X 1.5 PITCH	2										
16	ACCM-5430-9S											130	5.12	MOUNTING FLANGE	3										
17	ACC-5430-11S	10	4.54	17.8	1-3/8" ODF			430	16.93	474.5	18.68	NA	NA	M10 X 1.5 PITCH	2										
18	ACCM-5430-11S											130	5.12	MOUNTING FLANGE	3										
SERIES - Ø 6"																									
19	ACC-6330-7S	11	4.99	4.2	7/8" ODF			152.4	6	330	12.99	366.5	14.43	70	2.76	NA	NA		M10 X 1.5 PITCH	2	NA				
20	ACCM-6330-7S			11	4.99											9.45	1-1/8" ODF		466.5	18.36		130	5.12	MOUNTING FLANGE	3
21	ACC-6330-9S	14.5	6.58																						
22	ACCM-6330-9S			130	5.12											MOUNTING FLANGE	3								
23	ACC-6430-7S	14.5	6.58	9.45	1"- 1/8 ODF											430	16.93		466.5	18.36		NA	NA	M10 X 1.5 PITCH	2
24	ACCM-6430-7S																					130	5.12	MOUNTING FLANGE	3
25	ACC-6430-9S	14.5	6.58	17.8	1-3/8" ODF	430	16.93			473.5	18.64	NA	NA	M10 X 1.5 PITCH	2										
26	ACCM-6430-9S											130	5.12	MOUNTING FLANGE	3										
27	ACC-6430-11S	14.5	6.58	29.4	1"-5/8 ODF	430	16.93			489	19.25	NA	NA	M10 X 1.5 PITCH	2										
28	ACCM-6430-11S											130	5.12	MOUNTING FLANGE	3										
29	ACC-6430-13S	14.5	6.58	29.4	1"-5/8 ODF	430	16.93	489	19.25	NA	NA	M10 X 1.5 PITCH	2												
30	ACCM-6430-13S									130	5.12	MOUNTING FLANGE	3												
SERIES - Ø 8"																									
31	ACCM-8350-17S	24.2	11		2 - 1/8" ODF	219	8	350	13.8	427	16.8	100	3.9	-	-	MOUNTING FLANGE	5	NA							
SERIES - Ø 10"																									
32	ACCM-105485-21S	51.6	23.4		2 - 5/8" ODF	273	10	485	19	550	21.7	127	5	-	-	MOUNTING FLANGE	6	NA							

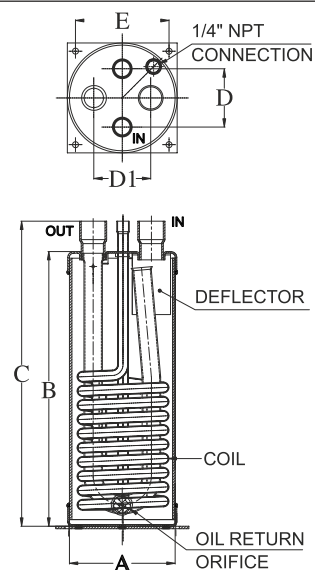
- 1) Mounting Flange Shown As 'M' In Model Number, With 4 Holes Of Ø7mm Available On Customer Request As Shown In Drawing - 3
- 2) For Holding Capacity Of R-134A, Multiply R-410a Capacity By 1.11 For R-22, Multiply R-410a Capacity By 1.09 & For R-404a, Multiply R-410a Capacity By 0.98
- 3) The Refrigerant Holding Capacity Of Dry All Accumulator Is Based On Average Condition Of More Than 50% Fill Under Running Condition
- 4) When Selecting Or Sizing An Accumulator Connections May Not Necessarily Match The Suction Line Size
- 5) Maximum Working Pressure - 25bar (355psig) Approx..
- 6) Fusible Plug Available On Specific Models



SUCTION LINE ACCUMULATOR WITH HEAT EXCHANGER



DIMENSIONAL DATA



Dry All Model	Holding capacity for R410A Liquid (Kg)	Connection Size (inch)	Heat Exchanger Coil Conn Size	Dimensions										Mounting details
				ØA		B		C		D1		D		
				mm	inch	mm	inch	mm	inch	mm	inch	mm	inch	
ACCHX-4254-4S	1.5	1/2 ODS	3/8 ODS	102	4	254	10	290	11.42	48	1.89	64	2.50	M10 X 1.5 Pitch
ACCHX-4254-5S	1.5	5/8 ODS	3/8 ODS	102	4	254	10	290	11.42	48	1.89	64	2.50	M10 X 1.5 Pitch
ACCMHX-5330-7S	3.2	7/8 ODS	1/2 ODS	127	5	330	13	368	14.47	70	2.76	70	2.76	Mounting Flange
ACCMHX - 6430-9S	6.5	1-1/8 ODS	5/8 ODS	152	6	430	17	467	18.37	70	2.76	70	2.76	Mounting Flange
ACCMHX-6635- 11S	7.5	1-3/8 ODS	5/8 ODS	152	6	635	25	679	26.71	70	2.76	70	2.76	Mounting Flange
ACCMHX-6635- 13S	7.5	1-5/8 ODS	3/4 ODS	152	6	635	25	694	27.32	70	2.76	70	2.76	Mounting Flange

*Note-Mounting Flange for 4" ACCHX Model is available as per customer requirement

Maximum working pressure = 450 psig.
Temperature Range: -40°C To +80°C.
Compatible with R134A, R22, R404A, R410A, R407C etc.

